



S. BERKELEY LAKE RD GRAVITY SEWER EXTENSION GWINNETT COUNTY, GA

Site Engineering contracted with Gwinnett County for the construction of a sanitary sewer along South Berkeley Lake Road between Old Peachtree Road and Peachtree Industrial Blvd, through the West Gwinnett Park and Aquatic Center.

The project included the installation of approximately 2,400 linear feet of 8-inch Ductile Iron Pipe, 170 lf of 16-inch steel casing via jack and bore; the removal and replacement of GDOT Type V-1 Hooded Curb Inlet along with site restoration and asphalt paving resurfacing.

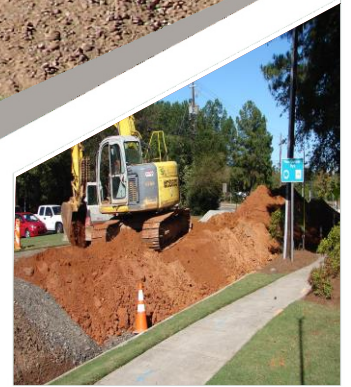
Owner: Gwinnett County

Owner Contact: Manoj Bhimani, (Manoj.Bhimani@gwinnettcountry.com)

Engineer: Cardozo Engineering, Cheryl Pierce, (cpierce@cardozo.com)

SEI Project Manager: David Hess, (david@siteengineeringinc.com)

Contract Value: \$787,080.00



WORK PERFORMED

Connection to existing manhole

6-inch DIP Sewer Laterals

Install of ten (10) manholes

16 lf of 24" RCP

Pipe Depths ranged from 12' – 20'



SITE ENGINEERING INC · 7025 BEST FRIEND ROAD · ATLANTA, GA 30340

770-263-7234 · INFO@SITEENGINEERINGINC.COM

WWW.SITEENGINEERINGINC.COM