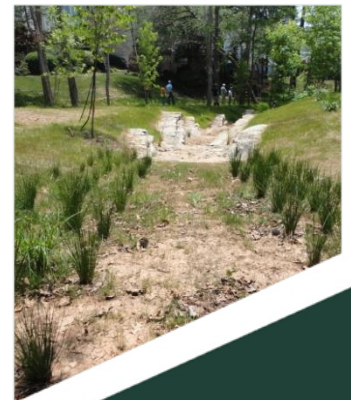
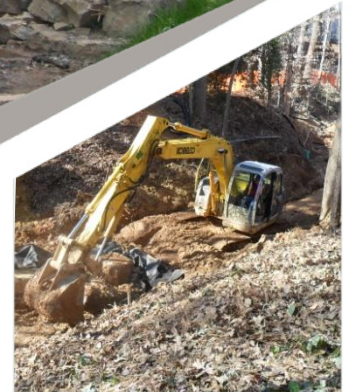




Spalding Square Stream Restoration \$434,000.00 Contract Amount Gwinnett County, GA

Spalding Square Stream Restoration project was squeezed in between two town home developments. The proximity to inhabited residences would prove challenging throughout the project. Safety, vibration, and protection of the structures were of top concern. The stream becomes perennial about half way through the project, which is interesting on days to see no water at the top and then gradually walking to the end of the project to see continuous flow form from a few drops to a trickle. The trickle during drought conditions could lull one into a sense of complacency with this stream. During heavy rainfalls the storm run-off powers through the narrow channel, rising upwards of 8 feet. A series of cross vane structures were devised to reduce the erosive power of these storm events.

Owner: Gwinnett County
Owner Contact: Pete Wright (pete.wright@gwinnettcountry.com)
Engineer: Brown and Caldwell / Jeff Herr / jherr@brwncald.com
SEI Project Manager: Paxton Billingsley (paxton@siteengineeringinc.com)



WORK PERFORMED:

900 lf stream restoration, close proximity to buildings, cross vane structures, step pool structures, J-hooks, log vanes, plunge pools, bank armor, storm water detention, outlet control structures, an earthen dam, sanitary sewer installation, paving, sidewalk

 SITE ENGINEERING INC • 7025 BEST FRIEND ROAD • ATLANTA, GA 30340

770-263-7234 • INFO@SITEENGINEERINGINC.COM

WWW.SITEENGINEERINGINC.COM